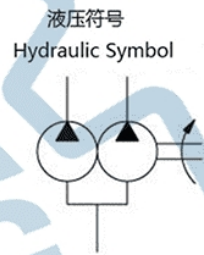
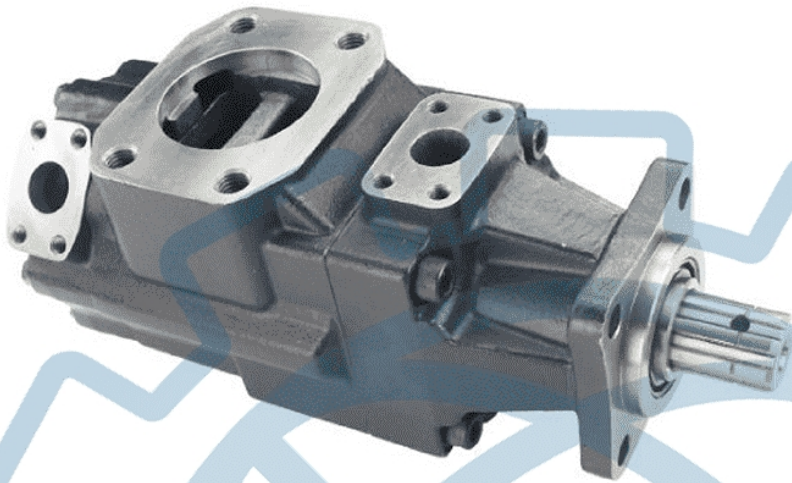




T6GCC/T67GCB/T7GBB系列柱销式双联叶片泵 T6GCC/T67GCB/T7GB Series Double Vane Pump



描述 Introduction

T6GCC/T67GCB/T7GBB系列柱销叶片泵具有体积小、流量大、压力高、噪音低、寿命长、容积效率高特点。采用双唇叶片设计，两唇与定子交变接触。该泵具有规格齐全、性能优良可靠、结构简单合理、安装维修方便等特点，可广泛应用于塑料机械、压铸机械、冶金机械、冶炼机械、压力机械、工程机械、船舶机械及各种液压系统等领域。

T6GCC/T67GCB/T7GBB series pin vane pump has the characteristics of small volume, large flow, high pressure, low noise, long life and high volume efficiency. Double lip blade design, two lips and stator alternating contact. The pump has complete specifications, excellent performance and reliable, simple and reasonable structure, easy installation and maintenance characteristics, can be widely used in plastic machinery, die casting machinery, metallurgical machinery, smelting machinery, pressure machinery, engineering machinery, Marine machinery and various hydraulic systems and other fields.

型号代码 Ordering Code

系列 Series	轴端泵排量代号 Displacement-Shaft end pump	盖端泵排量代号 Displacement-cover end pump	轴伸形式 Shaft type	旋转方向 Rotation	油口位置 Port positions	设计号 Design number	密封等级 Sealing Class	油口尺寸 port size
T6GCC	B03、B05、B06、B08、B10、B12、B14、B17、B20、B22、B25、B28、B31	B03、B05、B06、B08、B10、B12、B14、B17、B20、B22、B25、B28、B31						
T67GCB	B03、B05、B06、B08、B10、B12、B14、B17、B20、B22、B25、B28、B31	B02、B03、B04、B05、B06、B07、B08、B10、B12、B15	见轴伸尺寸 See shaft size	从泵轴端看 View from shaft end R-顺时针 clockwise; L-逆时针 counter clockwise;	见下图 see chart below	B	1-S1: 丁腈橡胶 NBR; 5-S5: 氟橡胶 FPM;	00、01、10、11
T7GBB	B02、B03、B04、B05、B06、B07、B08、B10、B12、B15	B02、B03、B04、B05、B06、B07、B08、B10、B12、B15						

003/B03: 排量代号中0表示单转向型配流侧板结构，B表示双转向型配流侧板结构

003/B03: In displacement code, 0 means single steering side plate structure, B means double steering side plate structure

与相应系列、规格的T6单泵性能参数一致，详见T6系列单泵的性能参

Same as equivalent T6 single pump see T6 series single pump performance for reference.



工作性能 Operation Performance

系列 Series	理论排量 theoretical displacement ml/r	转速 speed r/min	流量 Flow						功率 Power					
			P=0 Mpa	P=7 Mpa	P=14 Mpa	P=21 Mpa	P=24 Mpa	P=28 Mpa	P=0 Mpa	P=7 Mpa	P=14 Mpa	P=21 Mpa	P=24 Mpa	P=28 Mpa
			L/min	L/min	L/min	L/min	L/min	L/min	KW	KW	KW	KW	KW	KW
T6C-B03	10.8	1000	10.8	8.3	5.8	-	-	-	0.9	2.2	3.7	-	-	-
		1200	13.0	10.5	8.0	-	-	-	1.1	2.6	4.4	-	-	-
		1500	16.2	13.7	11.2	8.7	8.2	-	1.3	3.3	5.4	7.6	8.5	-
		1800	19.4	16.9	14.4	11.9	11.4	10.3	1.7	4.0	6.4	8.9	10.1	11.5
T6C-B05	17.2	1000	17.2	14.7	12.2	9.7	9.2	-	1.0	3.0	5.2	7.4	8.4	-
		1200	20.6	18.1	15.6	13.1	12.6	11.5	1.1	3.5	6.2	8.8	10.1	11.5
		1500	25.8	23.3	20.8	18.3	17.8	16.7	1.4	4.4	7.7	10.9	12.3	14.1
		1800	31.0	28.5	26.0	23.5	23.0	21.9	1.9	5.3	9.1	13.0	14.6	16.8
T6C-B06	21.3	1000	21.3	18.8	16.3	13.8	13.3	12.2	1.0	3.4	6.1	8.9	10.1	11.5
		1200	25.6	23.1	20.6	18.1	17.6	16.5	1.2	4.1	7.3	10.5	11.9	13.8
		1500	32.0	29.5	27.0	24.5	24.0	22.9	1.5	5.1	9.1	13.1	14.8	17.0
		1800	38.3	35.8	33.3	30.8	30.3	29.2	1.9	6.2	10.8	15.6	17.6	20.3
T6C-008	26.4	1000	26.4	23.9	21.4	18.9	18.4	17.3	1.1	4.0	7.3	10.6	12.0	13.9
		1200	31.7	29.2	26.7	24.2	23.7	22.6	1.3	4.8	8.7	12.7	14.4	16.6
T6C-B08	26.4	1500	39.6	37.1	34.6	32.1	31.6	30.5	1.6	6.0	10.9	15.8	17.8	20.6
		1800	47.5	45.0	42.5	40.0	39.5	38.4	3.1	7.2	13.0	18.8	21.3	24.6
T6C-010	34.1	1000	34.1	31.6	29.1	26.6	26.1	25.0	1.2	4.9	9.1	13.3	15.1	17.5
		1200	40.9	38.4	35.9	33.4	32.9	31.8	1.4	5.9	10.9	15.9	18.1	20.9
T6C-B10	34.1	1500	51.2	48.7	46.2	43.7	43.2	42.1	1.7	7.3	13.6	19.8	22.5	26.0
		1800	61.4	58.9	56.4	53.9	53.4	52.3	2.2	8.9	16.2	23.6	26.8	31.0
T6C-012	37.1	1000	37.1	34.6	32.1	29.6	29.1	28.0	1.2	5.3	9.8	14.4	16.3	18.9
		1200	44.5	42.0	39.5	37.0	36.5	35.4	1.4	6.3	11.7	17.2	19.5	22.6
T6C-B12	37.1	1500	55.7	53.2	50.7	48.2	47.7	46.6	1.7	7.9	14.6	21.4	24.3	28.1
		1800	66.8	64.3	61.8	59.3	58.8	57.7	2.3	9.5	17.5	25.5	29.0	33.6
T6C-014	46.0	1000	46.0	43.5	41.0	38.5	38.0	36.9	1.3	6.3	11.9	17.5	19.9	23.1
		1200	55.2	52.7	50.2	47.7	47.2	46.1	1.5	7.6	14.2	20.9	23.8	27.6
T6C-B14	46.0	1500	69.0	66.5	64.0	61.5	61.0	59.9	1.9	9.4	17.7	26.1	29.6	34.4
		1800	82.8	80.3	77.8	75.3	74.8	73.7	2.5	11.4	21.2	31.1	35.4	41.0



工作性能 Operation Performance

系列 Series	理论排量 theoretical displacement ml/r	转速 speed r/min	流量Flow						功率Power					
			P=0 Mpa	P=7 Mpa	P=14 Mpa	P=21 Mpa	P=24 Mpa	P=28 Mpa	P=0 Mpa	P=7 Mpa	P=14 Mpa	P=21 Mpa	P=24 Mpa	P=28 Mpa
			L/min	L/min	L/min	L/min	L/min	L/min	KW	KW	KW	KW	KW	KW
T6C-017 T6C-B17	58.3	1000	58.3	55.8	53.3	50.8	50.3	49.2	1.5	7.8	14.8	21.8	24.8	28.8
		1200	70.0	67.5	65.0	62.5	62.0	60.9	1.7	9.3	17.7	26.1	29.7	34.5
		1500	87.5	85.0	82.5	80.0	79.5	78.4	2.1	11.6	22.0	32.5	37.0	42.9
		1800	104.9	102.4	99.9	97.4	96.9	95.8	2.7	13.9	26.4	38.9	44.2	51.4
T6C-020 T6C-B20	63.8	1000	63.8	61.3	58.8	56.3	55.8	54.7	1.5	8.4	16.0	23.7	27.0	31.4
		1200	76.6	74.1	71.6	69.1	68.6	67.5	1.8	10.0	19.2	28.4	32.3	37.6
		1500	95.7	93.2	90.7	88.2	87.7	86.6	2.2	12.5	24.0	35.4	40.3	46.8
		1800	114.8	112.3	109.8	107.3	106.8	105.7	2.8	15.1	28.7	42.3	48.2	56.0
T6C-022 T6C-B22	70.3	1000	70.3	67.8	65.3	62.8	62.3	61.2	1.6	9.2	17.6	26.0	29.6	34.4
		1200	84.4	81.9	79.4	76.9	76.4	75.3	1.9	11.0	21.0	31.1	35.5	41.2
		1500	105.5	103.0	100.5	98.0	97.5	96.4	2.3	13.7	26.2	38.8	44.2	51.3
		1800	126.5	124.0	121.5	119.0	118.5	117.4	3.0	16.5	31.4	46.4	52.9	61.5
T6C-025 T6C-B25	79.3	1000	79.3	76.8	74.3	71.8	71.3	70.2	1.7	10.2	19.7	29.2	33.2	38.6
		1200	95.2	92.7	90.2	87.7	87.2	86.1	2.0	12.2	23.6	34.9	39.8	46.3
		1500	119.0	116.5	114.0	111.5	111.0	109.9	2.5	15.2	29.4	43.5	49.6	57.6
		1800	142.7	140.2	137.7	135.2	134.7	133.6	3.2	18.4	35.2	52.1	59.3	69.0
T6C-028 T6C-B28	88.8	1000	88.8	86.3	83.8	81.3	-	-	1.8	11.3	21.9	32.5	-	-
		1200	106.3	104.0	101.6	99.1	-	-	2.1	13.5	26.2	38.9	-	-
		1500	133.2	130.7	128.2	125.7	-	-	2.7	16.9	32.7	48.5	-	-
		1800	159.8	157.3	154.8	152.3	-	-	3.4	20.3	39.2	58.1	-	-
T6C-031 T6C-B31	100.0	1000	100.0	97.5	95.0	92.5	-	-	2.0	12.6	24.5	36.4	-	-
		1200	120.0	117.5	115.0	112.5	-	-	2.3	15.1	29.4	43.6	-	-
		1500	150.0	147.5	145.0	142.5	-	-	2.9	18.9	36.6	54.4	-	-
		1800	180.0	177.5	175.0	172.5	-	-	3.6	22.7	43.9	65.1	-	-

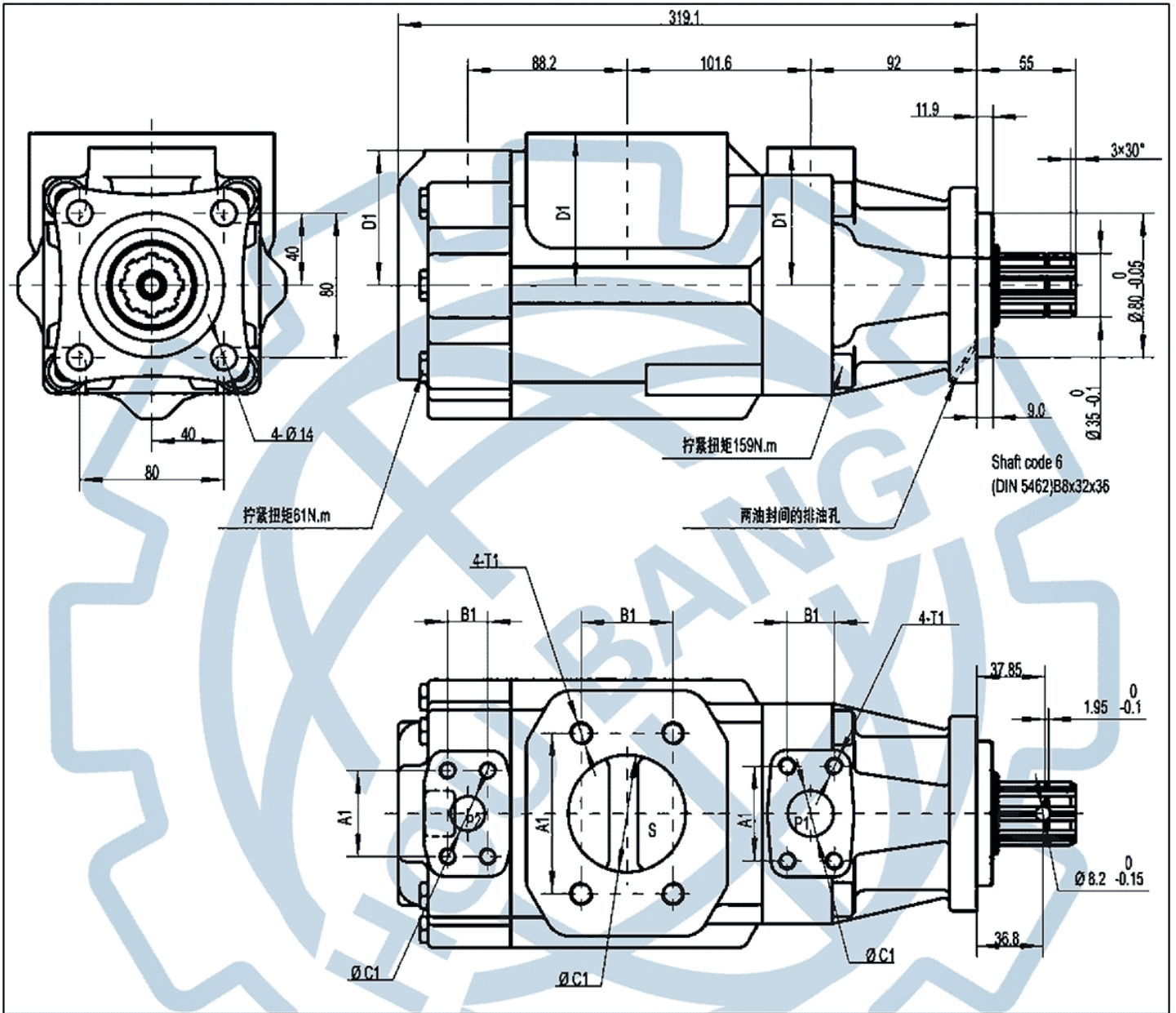


工作性能 Operation Performance

系列 Series	理论排量 theoretical displacement ml/r	转速 speed r/min	流量 Flow						功率 Power			
			P=0 Mpa	P=7 Mpa	P=14 Mpa	P=21 Mpa	P=24 Mpa	P=28 Mpa	P=0 Mpa	P=7 Mpa	P=14 Mpa	P=21 Mpa
			L/min	L/min	L/min	L/min	L/min	L/min	KW	KW	KW	KW
T7B(S)-B02	5.8	1000	5.8	4.9	4.2	3.3	-	-	-	0.2	0.9	1.7
		1200	7.0	6.1	5.4	4.5	4.0	-	-	0.4	1.3	2.2
		1500	8.7	7.8	7.1	6.2	5.7	5.2	4.7	0.6	1.7	2.8
		1800	10.4	9.5	8.8	7.9	7.4	6.9	6.4	0.7	2.0	3.4
T7B(S)-B03	9.8	1000	9.8	8.9	8.2	7.3	6.8	6.3	5.8	0.2	1.3	2.6
		1200	11.8	10.9	10.2	9.3	8.8	8.3	7.8	0.4	1.8	3.3
		1500	14.7	13.8	13.1	12.2	11.7	11.2	10.7	10.7	2.4	4.2
		1800	17.6	16.7	16.0	15.1	14.6	14.1	13.6	0.8	2.8	5.1
T7B(S)-B04	12.8	1000	12.8	11.9	11.2	10.3	9.8	9.3	8.8	0.2	1.7	3.3
		1200	15.4	14.5	13.8	12.9	12.4	11.9	11.4	0.5	2.2	4.2
		1500	19.2	18.3	17.6	16.7	16.2	15.7	15.2	0.7	2.9	5.3
		1800	23.0	22.1	21.4	20.5	20.0	19.5	19.0	0.9	3.4	6.4
T7B(S)-B05	15.9	1000	15.9	15.0	14.3	13.4	12.9	12.4	11.9	0.3	2.1	4.1
		1200	19.1	18.2	17.5	16.6	16.1	15.6	15.1	0.5	2.7	5.0
		1500	23.9	23.0	22.3	21.4	20.9	20.4	19.9	0.8	3.4	6.4
		1800	28.6	27.7	27.0	26.1	25.6	25.1	24.6	0.9	4.1	7.7
T7B(S)-B06	19.8	1000	19.8	18.9	18.2	17.3	16.8	16.3	15.8	0.3	2.5	5.0
		1200	23.8	22.9	22.2	21.3	20.8	20.3	19.8	0.6	3.2	6.1
		1500	29.7	28.8	28.1	27.2	26.7	26.2	25.7	0.8	4.1	7.7
		1800	35.6	34.7	34.0	33.1	32.6	32.1	31.6	1.0	4.9	9.3
T7B(S)-B07	22.5	1000	22.5	21.6	20.9	20.0	19.5	19.0	18.5	0.4	2.8	5.6
		1200	27.0	26.1	25.4	24.5	24.0	23.5	23.0	0.6	3.6	6.9
		1500	33.8	32.9	32.2	31.3	30.8	30.3	29.8	0.9	4.6	8.7
		1800	40.5	39.6	38.9	38.0	37.5	37.0	36.5	1.1	5.5	10.5
T7B(S)-B08	24.9	1000	24.9	24.0	23.3	22.4	21.9	21.4	20.9	0.4	3.1	6.2
		1200	29.9	29.0	28.3	27.4	26.9	26.4	25.9	0.6	3.9	7.6
		1500	37.4	36.5	35.8	34.9	34.4	33.9	33.4	0.9	5.0	9.5
		1800	44.8	43.9	43.2	42.3	41.8	41.3	40.8	1.1	6.0	11.5
T7B(S)-B10	31.8	1000	31.8	30.9	30.2	29.3	28.8	28.3	27.8	0.5	3.9	7.8
		1200	38.2	37.3	36.6	35.7	35.2	34.7	34.2	0.7	4.9	9.5
		1500	47.7	46.8	46.1	45.2	44.7	44.2	43.7	1.1	6.2	11.9
		1800	57.2	56.3	55.6	54.7	54.2	53.7	53.2	1.3	7.4	14.4
T7B(S)-B12	41.0	1000	41.0	40.1	39.4	38.5	38.0	37.5	-	0.6	5.0	9.9
		1200	49.2	48.3	47.6	46.7	46.2	45.7	-	0.9	6.2	12.1
		1500	61.5	60.6	59.9	59.0	58.5	58.0	-	1.2	7.8	15.2
		1800	73.8	72.9	72.2	71.3	70.8	70.3	-	1.5	9.4	18.2
T7B(S)-B15	50.0	1000	50.0	49.1	48.4	47.5	47.0	46.5	-	0.7	6.0	12.0
		1200	60.0	59.1	58.4	57.5	57	56.5	-	1.0	7.4	14.6
		1500	75.0	74.1	73.4	72.5	72.0	71.5	-	1.4	9.4	18.3
		1800	90.1	89.1	88.4	87.5	87.0	86.5	-	1.7	11.3	22.0



三联泵外形安装尺寸 Triple Pump Outline Dimension



油口 Oil Port		法兰 Flange	安装尺寸(mm) Installation Dimensions (mm)					
			A1	B1	ΦC1	D1	T1口螺纹 Thread	
T6GCC	P1	1"	F08	26.2	52.4	25.4	76.2	3/8"-16UNC×19
T67GCB	P2	01&11 : 3/4"	F06	22.2	47.6	19.1	76.2	3/8"-16UNC×19
		01&10 : 1"	F08	26.2	52.4	25.4	74.7	
T7GBB	S	10&11 : 2-1/2"	F20	50.8	88.9	63.5	84.1	1/2"-13UNC×23.9
		00&01 : 3"	F24	61.9	106.4	76.2	84.1	5/8"-13UNC×28.4